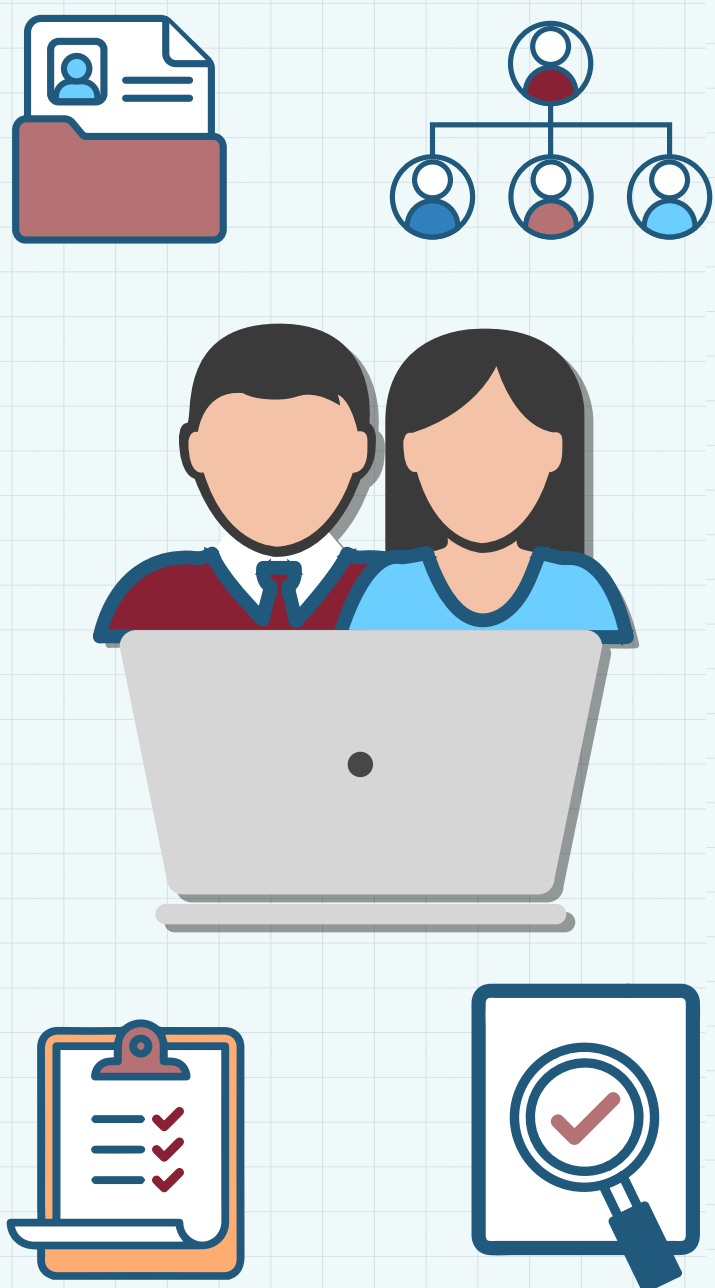


NATIONAL CENSUS FOR TRANSPARENCY, ACCESS TO PUBLIC INFORMATION AND PROTECTION OF PERSONAL DATA (CNTAIPDPF)¹



Notes:

¹ For its acronym in Spanish.

² For its acronym in Spanish.

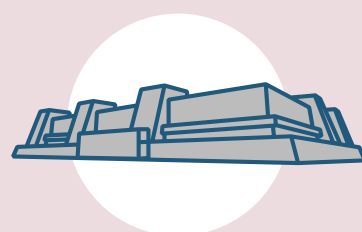
³ INEGI, Technical Standard for the Generation of Basic Statistics, Mexico, 2010.

⁴ Refers to sample surveys.

⁵ For its acronym in Spanish.

⁶ The questionnaire encompasses queries about data prior of the year of coverage and the time it was filled out. The data structures refer to the previous year of application.

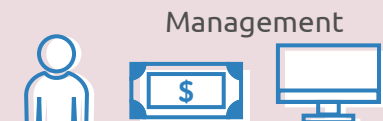
Find out all the
information
Scan!



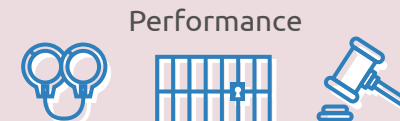
INEGI²

Among other information programs, it produces the National Government Censuses (NGC).

NGC PROVIDE INFORMATION ON THE GOVERNMENT INSTITUTIONS OF THE COUNTRY ABOUT:



Human, financial and compute resources and services



Application of available resources in the topics covered by NGC

to know more+ INEGI



WHAT IS A CENSUS?

It is a method used to collect data on each of the elements that make up the population from which information is sought.³

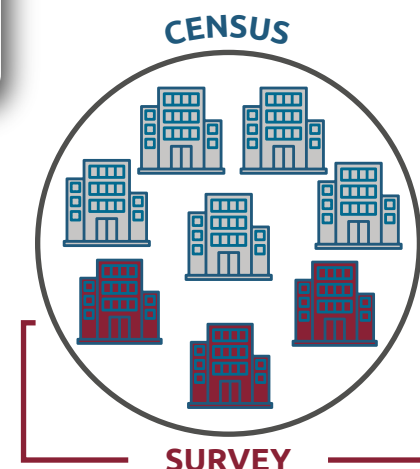
CENSUS

Collects data from the total set of items of the population from whom information is sought.

VS

SURVEY⁴

Collects data from a representative sample of the population from whom information is sought.



CNTAIPDPF'S OBJECTIVE AND STATISTICAL DESIGN



To generate statistical information on the management and performance of the National Institute of Transparency, Access to Public Information and Protection of Personal Data (INAI).

CONDUCTED SINCE: 2017

TYPE:
Permanent program

REGULARITY:
Annual



COVERAGE:
Results at federal level

REFERENCE PERIOD:
It changes according to the question block and to the instrument to be filled⁶

HOW IS THE INFORMATION COLLECTED?

Who requests the information?

Public servants from the INEGI



To whom is it requested?

To public servants of the INAI⁵ that, for the functions that are entrusted to them, are designated to collect, integrate and deliver the required information, who are better known as informants

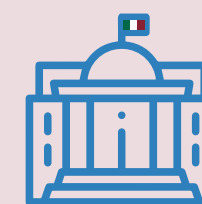


How is it requested?

By filling out a questionnaire and a data structure which are answered by informants guided by the INEGI public servants



TARGET POPULATION = GOVERNMENT



INTEGRATED BY:
Advisory council



Plenum



Administrative units

INFORMANTS



NATIONAL INSTITUTE OF TRANSPARENCY, ACCESS TO PUBLIC INFORMATION AND PROTECTION OF PERSONAL DATA (INAI)

DESIGNATED PUBLIC SERVANTS

INFORMATION COLLECTED FROM THE INAI

- Organizational structure and resources
- Requests for access to information and protection of personal data
- Applicants
- Regulated entities
- Reports of acts or omissions
- Proactive transparency
- Open government

INAI



MAIN CHANGE IN THE 2023 EDITION



DATA STRUCTURE

It allows the statistical use of the administrative records of:

- Regulated entities
- Enforcement measures and sanctions imposed by the INAI
- Requests for information access and protection of personal data
- Review resources
- Complaints filed