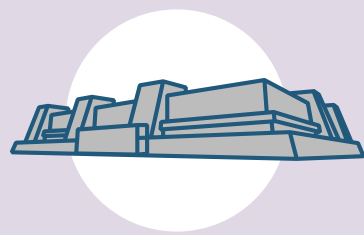
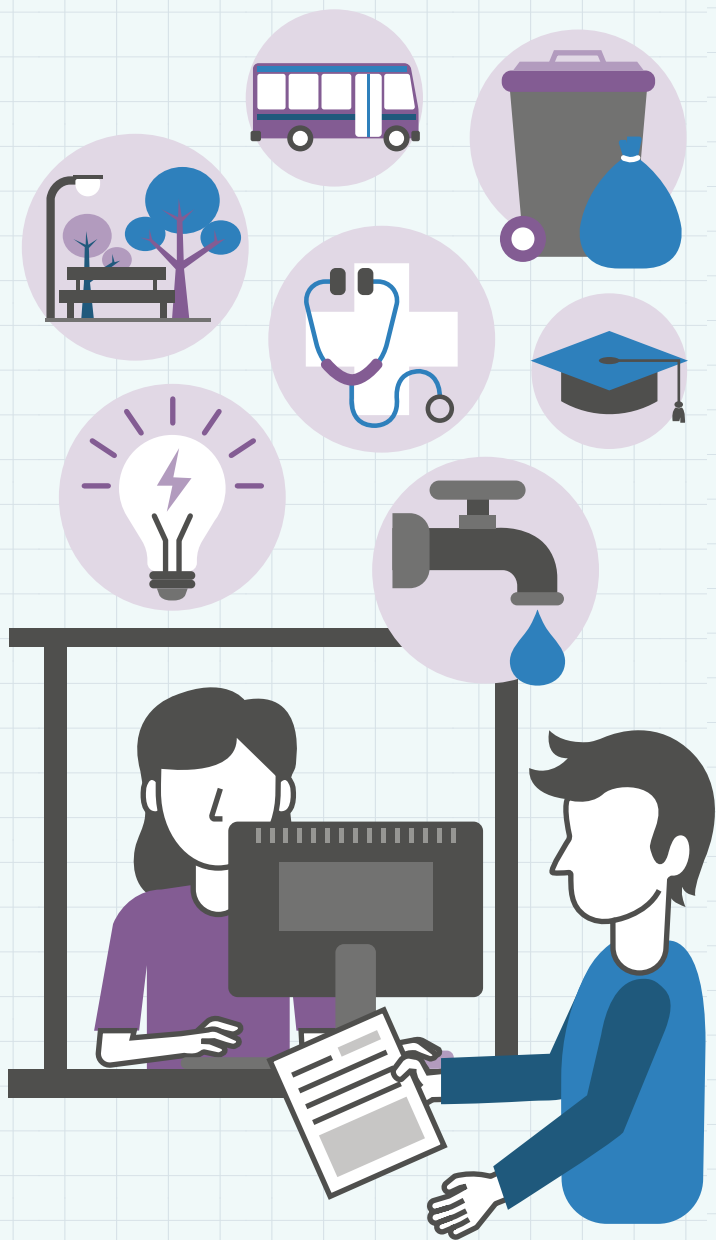
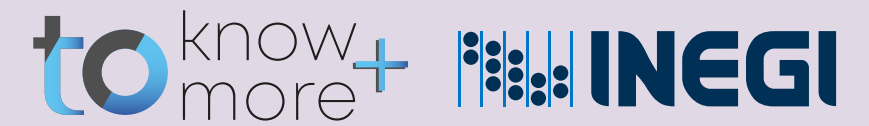


NATIONAL SURVEY OF GOVERNMENTAL QUALITY AND IMPACT (ENCIG)



INEGI
Among other topics, produces the National Surveys of Government (ENG)

ENG PROVIDE INFORMATION ON:



WHAT IS A SURVEY?

It is a method used to collect data of interest from a representative **sample** of the population from which we seek to obtain information.¹

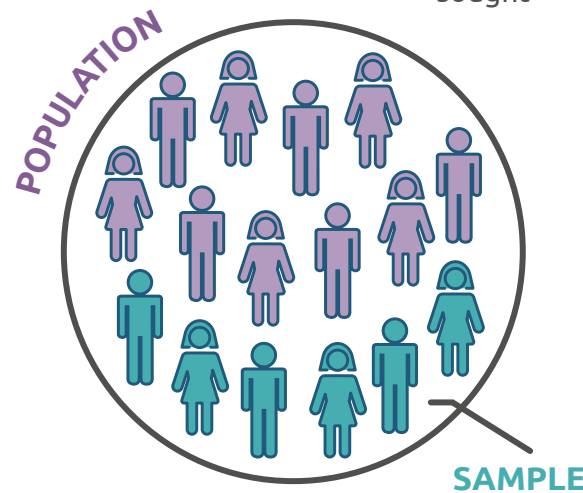
POPULATION

Total number of people from whom information is sought

VS

SAMPLE

Part of the total number of people from whom information is sought



To provide information on the population's experiences and perceptions of government procedures and services; as well as acts of corruption when having contact with government authorities.

OBJECTIVE AND STATISTICAL DESIGN OF THE ENCIG



SAMPLE = A PART OF THE TOTAL OF THE HOUSING UNITS IN MEXICO



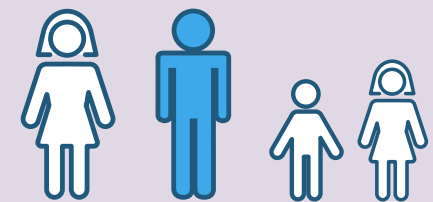
LOCATION OF THE HOUSING UNITS: CITIES WITH 100 THOUSAND INHABITANTS AND MORE

INFORMANT



SELECTED PERSON

HOUSEHOLD



BEGINNING:
2011

TYPE:
Permanent program

PERIODICITY:
Every two years

SAMPLE:
46,000 housing units²

COVERAGE:
Results at the national level and by state

REFERENCE PERIOD:
The questions in the questionnaire are from the year in which the survey was conducted

- To live in the selected household
- To be 18 years and over

ENCIG PROCEDURE

WHO REQUESTS THE INFORMATION?

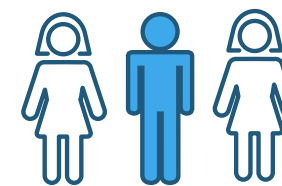


Interviewers from the INEGI visit the selected housing units

HOW DO THEY REQUEST IT?



Through the application of a general questionnaire with questions organized by topics



First, a person is located who knows and provides the sociodemographic data of the members of his or her household.³

FROM WHOM IS IT REQUESTED?



With the information obtained, the informant is selected and answers the questionnaire.⁴

Notes:
¹ Refers to sample surveys.

INEGI, Technical Standard for the Generation of Basic Statistics, Mexico, 2010.

² It corresponds to the 2023 edition. The size of the national sample may change in subsequent editions.

³ The data requested includes gender, age, degree of studies and occupation.

⁴ This may be the same person who provides the sociodemographic data.

Find out all the information Scan!



THE ENCIG PROVIDES INFORMATION REGARDING:

